

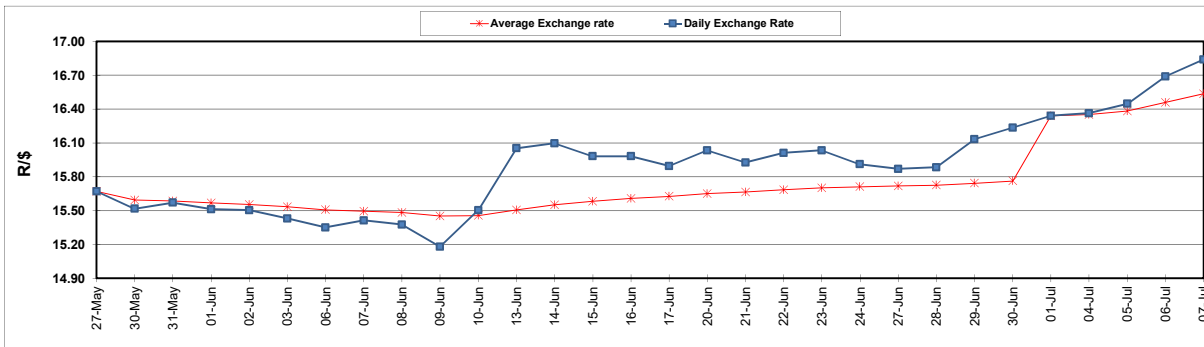
	PETROL 95 ULP	PETROL 93 ULP & LRP	DIESEL 0.05%	DIESEL 0.005%	ILL. PAR.
GAUTENG PUMP PRICE (SA c/l) AS FROM 06/07/2022	2,674.000	2,631.000	-	-	-
WHOLESALE PRICE (SA c/l) AS FROM 06/07/2022	-	-	2,540.440	2,552.840	1,986.288
SINGLE NATIONAL MAXIMUM RETAIL PRICE	-	-	-	-	2,623.000
BASIC FUEL PRICE - 07/07/2022 (SA c/l)	1,530.935	1,478.497	1,540.369	1,551.393	1,540.536
PRESS RELEASE CONTRIBUTION TO BFP 06/07/2022 - 07/07/2022 (SA c/l)	1,689.410	1,646.410	1,763.630	1,776.030	1,768.128
UNIT OVER/(UNDER) RECOVERY - 01/07/2022 (SA c/l)	158.475	167.913	223.261	224.637	227.592
AVERAGE BASIC FUEL PRICE 01/07/2022 - 07/07/2022	1,591.862	1,533.424	1,640.193	1,650.780	1,627.120
AVERAGE UNIT OVER/(UNDER) RECOVERY 01/07/2022 - 07/07/2022	(11.652)	15.786	29.837	32.250	41.408

ANALYSIS MOVEMENT OF AVERAGE OVER/(UNDER) RECOVERY

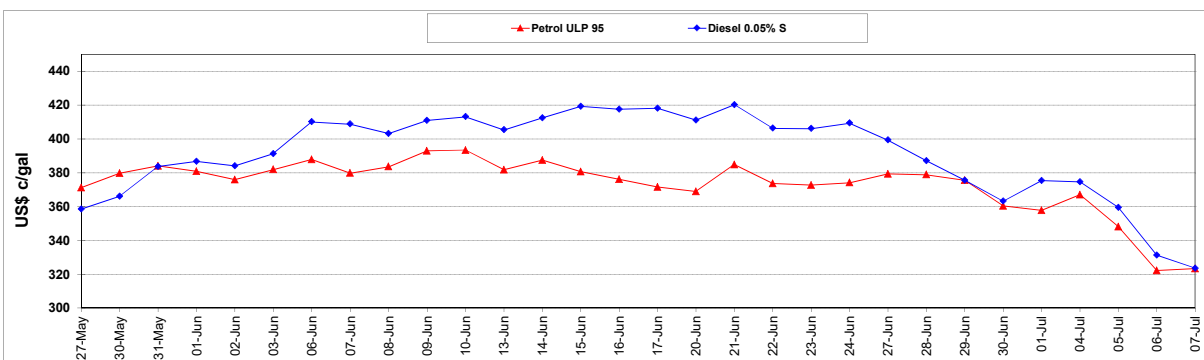
	PETROL 95	PETROL 93	DIESEL 0.05%	DIESEL 0.005%	ILL. PAR.
- MOVEMENT IN INTERNATIONAL PRODUCT PRICES	62.700	87.409	106.447	109.354	117.407
- MOVEMENT IN EXCHANGE RATE	(74.352)	(71.623)	(76.610)	(77.104)	(75.999)
AVERAGE UNIT OVER/(UNDER) RECOVERY 01/07/2022 - 07/07/2022	(11.652)	15.786	29.837	32.250	41.408

R/\$ EXCHANGE RATE - (R/\$16.8380 - 07/07/2022)

EXCHANGE RATE USED IN BASIC FUEL PRICE



INTERNATIONAL PRODUCT PRICES OF BASKET USED IN BASIC FUEL PRICE



BASIC FUEL PRICE IN SA CENTS PER LITRE

